

Public Meeting

January 10, 2025



T E X A S
EARLY LEARNING
C O U N C I L

Welcome!

Thank you for joining this meeting. We will begin shortly.

Members of the public are still able request to provide oral public comment today by emailing their request to megan.schneider@tea.texas.gov. Please include your name (as it appears in Zoom), email, organization you are representing, and agenda topic being addressed.

Agenda

1. Call to Order
2. October 2024 Minutes Approval
3. Public Comment
4. Texas Early Learning Strategic Plan
5. Updates from TELC Members
6. Upcoming Early Childhood Events
7. Adjourn

Public Comment

Earlylearningtexas.org has a section called Meetings. This houses all the meeting information for past and upcoming meetings as well as the agenda once it's released. Public agendas are posted a minimum of one week prior to the meeting date, along with instructions for submitting public comment.

- Please provide your name, organization, and the agenda topic you are commenting on for the record.
- Each speaker will be allotted three minutes to provide your public comment. When you hear a chime sound at the two-minute mark, this indicates that you will have one minute remaining to wrap up comments.
- Council members may ask questions after each speaker concludes.



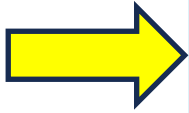
T E X A S
EARLY LEARNING
C O U N C I L

Texas Early Learning Strategic Plan

2024 – 2026



2024-2026 Texas Early Learning Strategic Plan Goals



Family Access, Navigation & Engagement	Goal 1	Families can easily meet their basic needs and access the early learning services, programs, and resources they need, and are meaningfully engaged to provide feedback on services.
Workforce Recruitment, Retention & Support	Goal 2	The early learning workforce is well-paid, trained and supported; can reach and obtain the professional development resources they need throughout their careers; and is large enough to meet Texans' needs.
Local Systems & Partnership Building	Goal 3	Local early learning systems are well-coordinated, appropriately resourced, and successfully support the children and families in their communities.
Integrated Data & System	Goal 4	State early learning system entities are collaborating to make family- and data-informed decisions to improve services, programs and resources for children and their families.

Family Access, Navigation & Engagement

Strategy 1.1: Streamline intake and administrative systems for parents and providers to make it easier for families to navigate early learning programs and services.

- ❑ **Action 1.3.2:** DSHS will continue to fund and expand Help Me Grow (HMG) Texas and Healthy Child Care Texas to increase cross-sector use of developmental screenings.



TEXAS
Health and Human
Services

**Texas Department of State
Health Services**

Help Me Grow (HMG) Texas

Texas Early Learning Council Meeting

Bridgette Losey

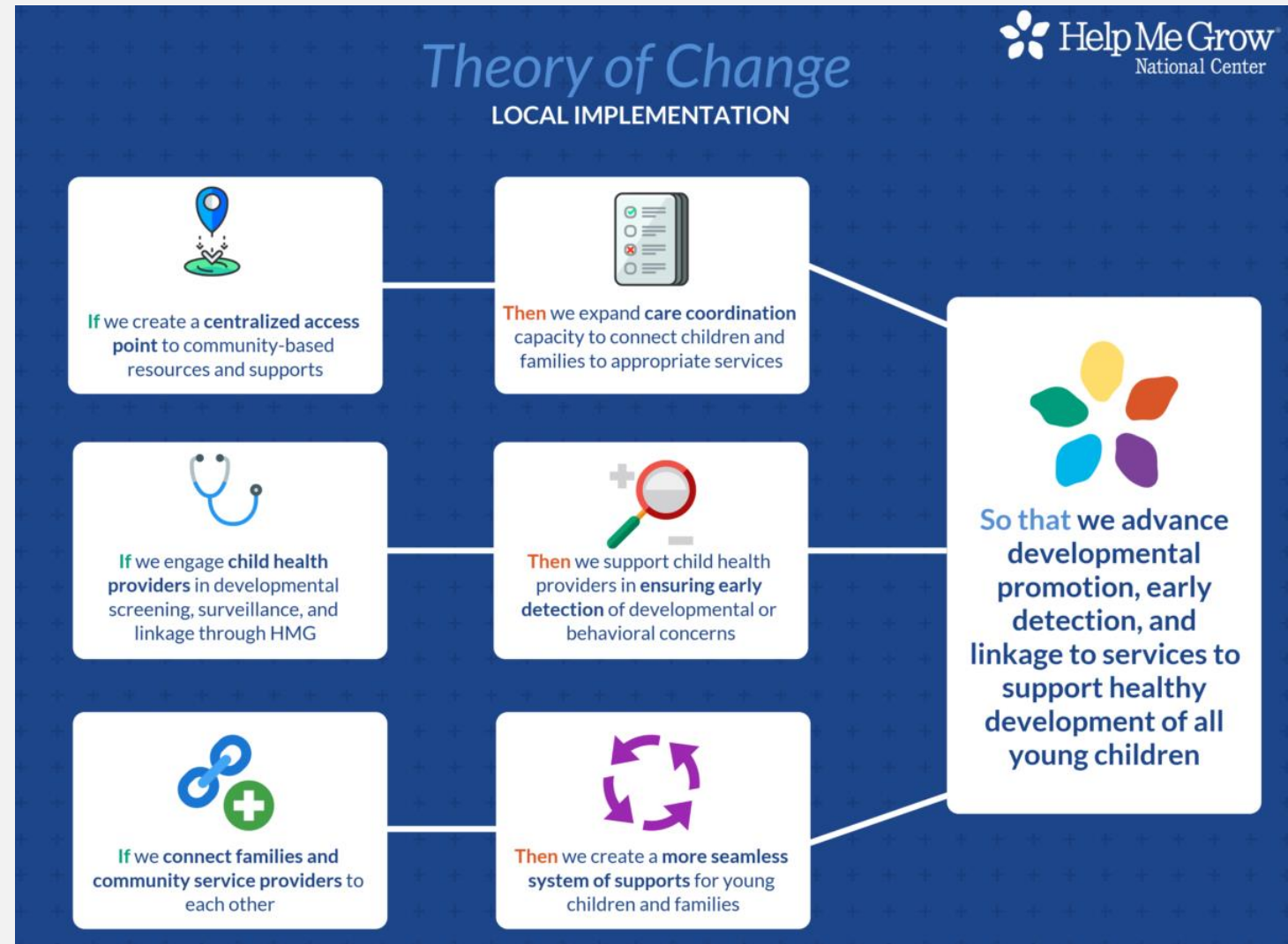
Help Me Grow Coordinator

January 10, 2025

Help Me Grow (HMG) Summary

Help Me Grow aims to improve children's access to developmental screening through:

- Improving access in various settings;
- Implementation of public awareness campaigns; and
- Creation of a data collection system.



The Help Me Grow System Model



TEXAS
Health and Human
Services

Texas Department of State
Health Services

HMG System Model Overview

A system model that leverages and enhances existing resources to develop and enhance a comprehensive approach to early childhood system building in any given community.

It is the **cooperation** of the core components that defines the system.



Why Help Me Grow?



TEXAS
Health and Human
Services

Texas Department of State
Health Services

Systems Building Matters



Early is best



Need for improved
coordination



1 in 10 babies born in
the U.S. is born in TX

HMG Texas Summary

Maternal and Child Health Unit at Texas Department of State Health Services (DSHS) supports family-centered, community-based, coordinated systems of care development.

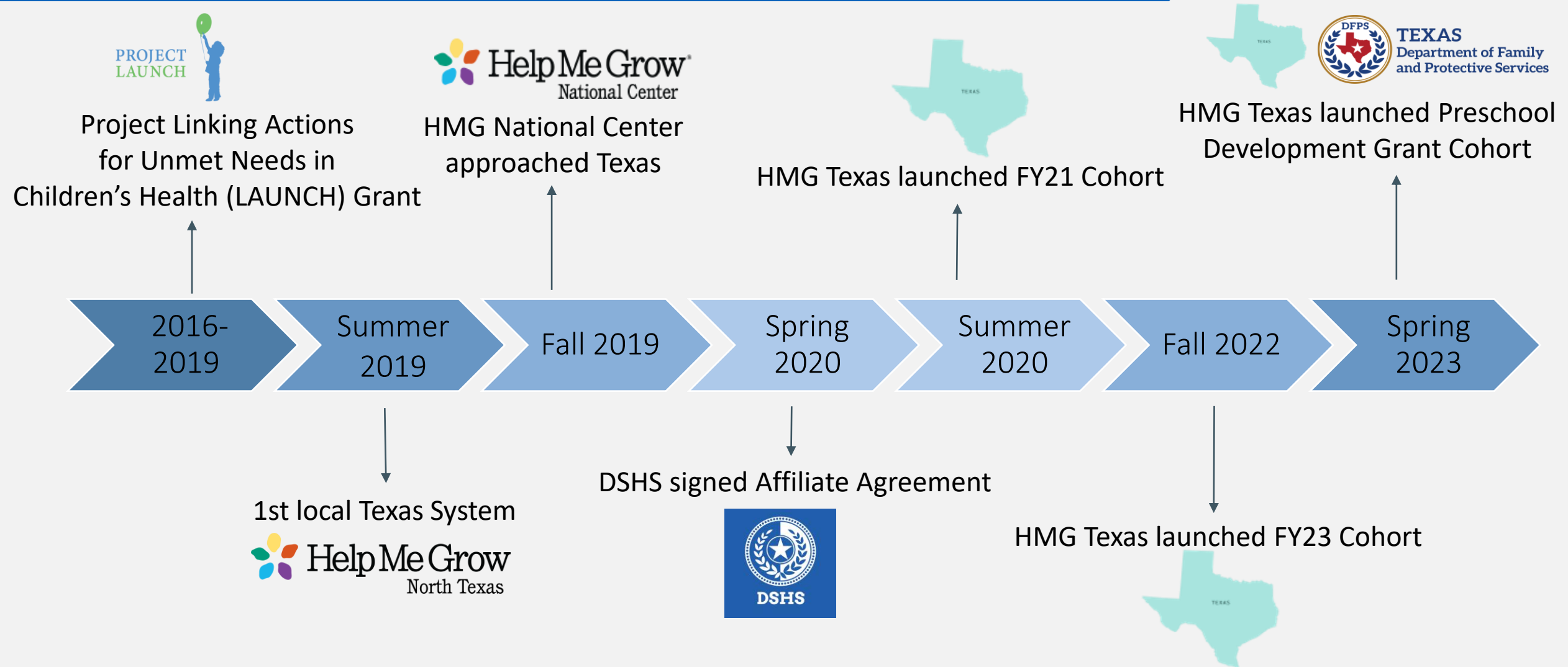
DSHS serves as the organizing entity for HMG Texas and supports HMG Texas affiliates in community-based HMG System Model implementation to meet the needs of local families.



TEXAS
Health and Human
Services

Texas Department of State
Health Services

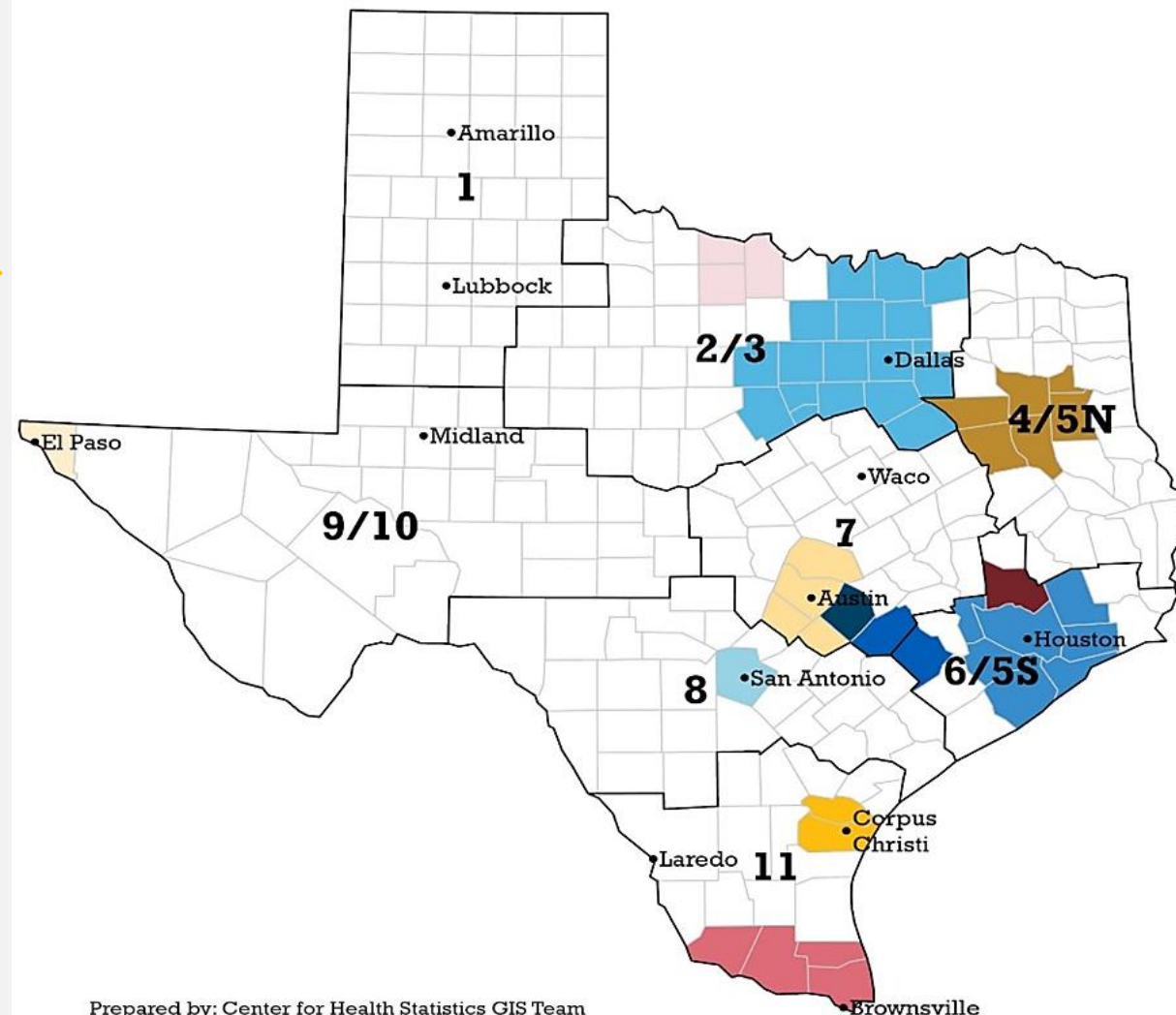
HMG Texas History



HMG Texas Reach

Help Me Grow (HMG) Texas Sites

- HMG Texas Affiliates



Prepared by: Center for Health Statistics GIS Team
Last Updated: October 2024



TEXAS
Health and Human
Services

Texas Department of State
Health Services

HMG Fidelity Assessments

	Total Number
	(Reporting Period: January 1, 2023-December 31, 2023)
Centralized Access Point (CAP) Activities	
Children served	9,468
CAP activities	46,668
Families served	9,009
Families served that resulted in a referral	6,447
Family & Community Outreach	
Individuals (parents, caregivers, family) reached through HMG coordinated or led events	7,013
Individuals (non-families) representing community agencies reaching through HMG coordinated or led events	10,547
Child Healthcare Provider Outreach	
Trainings provided by HMG to medical staff on developmental screening & referral linkage	97

FY24 Highlights



- Served 11,249 families through Centralized Access Points
- Made 21,025 unique referrals
- Conducted 7,259 Ages & Stages Questionnaires® (ASQ®)
- Reached 17,318 individuals through events coordinated by affiliates
- HMG North Texas has reached full implementation of the HMG System Model
- Four affiliates likely to reach full implementation in FY25

Thank you!

HMGTexas@dshs.Texas.gov

Family Access, Navigation & Engagement

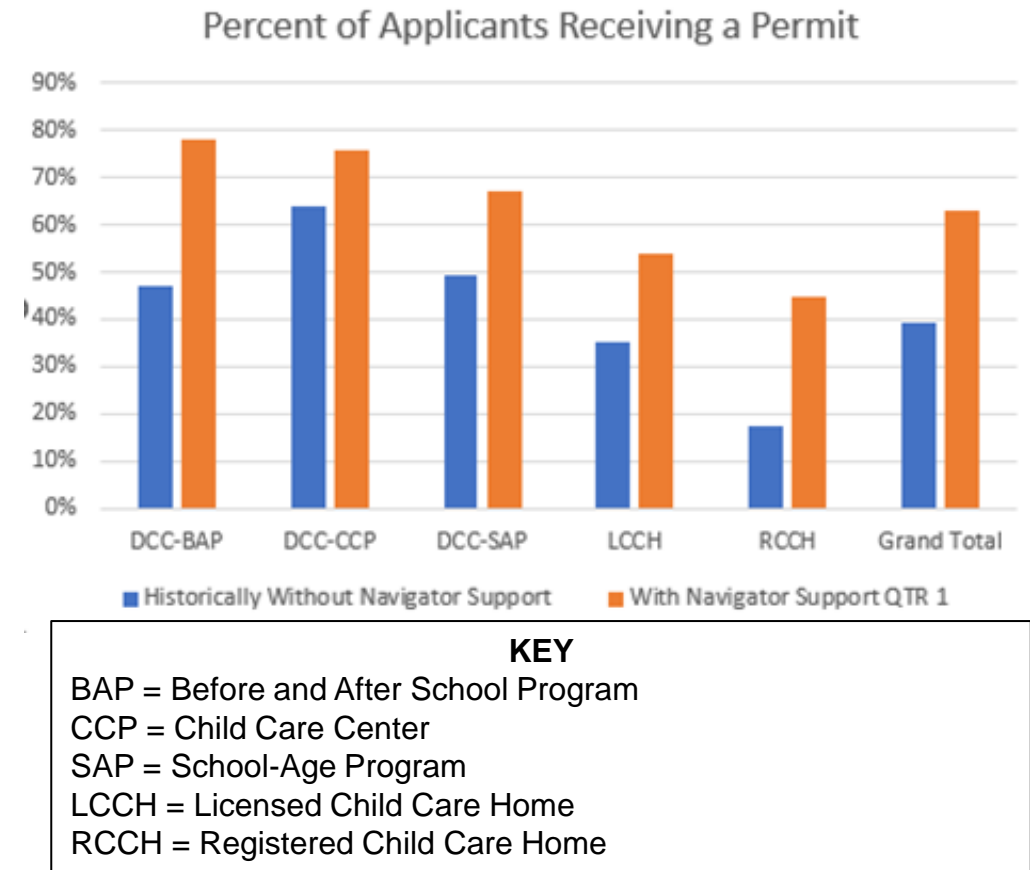
Strategy 1.2: Increase availability and supply of early learning programs and services.

- ❑ **Action 1.2.5:** TWC will continue funding Child Care Navigators at HHSC Child Care Regulation to increase high-quality child care provider access in Texas.

Family Access, Navigation & Engagement

Child Care Regulation Navigators

- ☐ 8 Navigators located statewide
- ☐ Partner with applicants and assist them during the application process
- ☐ Identify resources and provide coordination
- ☐ Collaborate with CCR Monitoring inspectors towards issuance efforts
- ☐ Improve issuance rates



Family Access, Navigation & Engagement

Strategy 1.4: Increase family feedback to improve the quality and accessibility of early learning services.

- ❑ **Action 1.4.1:** LEAs will continue to create and post their Prekindergarten Family Engagement Plan on their district web pages for families to access.

Measure of success: For the 2023-2024 school year, the number of LEAs submitting a valid website link for prekindergarten family engagement will increase by 10% when compared to TEA data from school year 2022-2023.

Strategic Plan Workgroup Update

- First meeting was held on December 12th, 2024.
- 10 members in attendance (6 members of the TELC and 4 appointees)
- The agenda included the following:
 - Introductions
 - Roles and Responsibilities of Membership
 - Overview of Other Early Childhood Cross-Sector Workgroups
 - Overview of the Texas Early Learning Strategic Plan
 - A poll has been sent to all members of the workgroup. Members are completing a poll to prioritize areas of focus.
 - Next meeting date is January 16th, 2025.



Updates from TELC Members

TWC updates

- TX3C – Statewide parent application
- Early Educators Credit Pathways Support
 - Funding for public Institutions of Higher Education (IHEs) to create and define clear credit pathways in the Early Childhood field.
 - Credit transfer or articulation agreements towards a higher education degree
 - Credit for work-based learning
 - Credit for competency
 - Credit for a CDA® credential
 - Dual-credit course development with an LEA
 - <https://www.twc.texas.gov/early-educators-credit-pathways-support>



Updates from TELC Members

Open Grant Opportunities



TEXAS
Health and Human
Services

Procurement Number	Agency	Program Name/Procurement Name	Release Date	Submission Deadline
HHS0015167	HHSC	Family Health Services <i>Thriving Texas Families</i>	12/20/2024	2/14/2025
HHS0015213	HHSC	Family Violence Program (FVP) <i>FVP Special Nonresidential Projects</i>	12/19/2024	2/27/2025
HHS0015358	HHSC	Family Support Services <i>Healthy Outcomes through Prevention and Early Support (HOPES)</i>	12/17/2024	2/12/2025
HHS0015183	HHSC	Family Support Services <i>Service Members, Veterans, and Families (SMVF)</i>	12/16/2024	2/13/2025
HHS0015202	HHSC	Family Violence Program (FVP) Grant <i>FVP Shelter and Nonresidential Services</i>	12/12/2024	2/24/2025
HHS0015199	HHSC	Family Violence Program <i>Family Violence Program Statewide Administrative Support Services</i>	12/9/2024	2/14/2025
HHS0015297	HHSC	Family Health Services <i>Family Planning Program (FPP)</i>	11/25/2024	1/10/2025
HHS0014626	HHSC	Early Childhood Intervention (ECI) <i>Early Childhood Intervention (ECI)</i>	11/21/2024	1/17/2025



Upcoming Early Childhood Events

Upcoming TELC Meeting Dates

April 11, 11am to 1pm

August 8, 11am to 1pm

October 24, 11am to 1pm

Adjourn



Thank you for your time! The meeting slides and recording will be posted at:

www.earlylearningtexas.org/

Next meeting:

April 11, 2025 from 11am to 1pm